

# Keeping Orange County Moving



## Highway Program Outreach Update

Christina Byrne, OCTA

January 21, 2014



# Why Conduct Community Outreach?

- Legally required
- Identifies community concerns
- Helps mitigate project impacts
- Communicates project progress
- Demonstrates taxpayer dollars at work



# Project Delivery Phases

## Project Approval/Environmental Documents (PA/ED)

- Scoping
- Stakeholder / Policy Working / Technical Groups
- Draft EIR/EIS
  - Public Hearing



## Plans, Specifications and Estimates (PS&E)

- City/Public Agency Staff
- City Cooperative Agreements
- Public Meetings/Open Houses
- Community Ascertainment

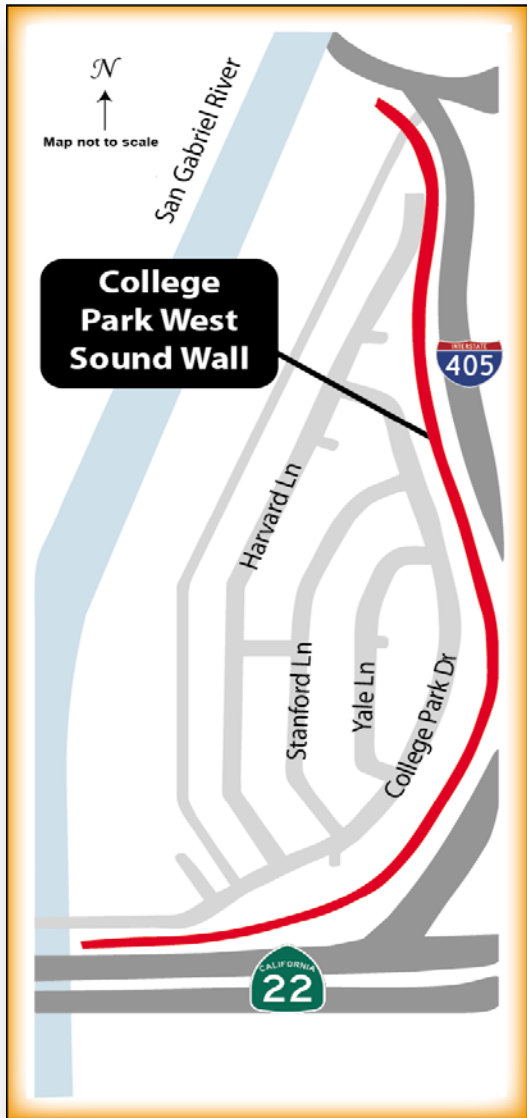


## Construction

- Neighborhood Meetings
- Construction Alerts
- Commuters, Residents, Businesses, Media and other stakeholders



# West County Connectors



# SR-91 Multimedia Communications



**RIVERSIDE FREEWAY (SR-91)**  
WESTBOUND AND EASTBOUND LANE WIDENING PROJECT

**PROJECT BENEFITS**

- Will add 6-mile lanes in each direction between SR-241 and SR-91.
- More additional transportation options for Los Angeles, Riverside, San Jacinto, and San Diego.

**Caltrans and OCTA are moving forward on the SR-91 WB and EB Lane Project, which will provide motorists a new route to travel in each direction from about the SR-241 to the 240. Today, crews are diligently working to pave lanes, install signs, and construct erosion walls. The project is off to a good start and the pace will pick up in the weeks ahead.**

**Lane and Ramp Work**

**RIVERSIDE FREEWAY SR-91 Improvement Project**

The Riverside Freeway (SR-91) serves as a major connecting route connecting Orange County with Riverside and Los Angeles counties. SR-91 is also one of the most congested freeways in Southern California.

To improve traffic flow along SR-91 between the Santa Ana Freeway (I-5) in Buena Park and the Corona Freeway (SR-78) in Corona, the Orange County Transportation Authority (OCTA), Caltrans District 12 and the Riverside County Transportation Authority (RCTA) are working together to add new lanes to SR-91.

**Overall Benefits:**

- Add new lanes to increase capacity at key points between I-5 and SR-71
- Improve flow of traffic on SR-91 throughout this 23-mile stretch
- Improve driving operations and enhance safety

**Traffic Projection for SR-91**

Vehicle Per Day
300,000
400,000
500,000

**Fernando Chavarria**  
@91fwy

Sharing tweets about 91 freeway construction delivered in partnership by OCTA and Caltrans District 12.  
Orange County, CA - octa.net/better91

531 TWEETS | 962 FOLLOWING | 967 FOLLOWERS

**Tweets**

**Fernando Chavarria** @91fwy 22m  
This week on the #91fwy WB Project, crews work on utilities, bridges at Raymond & Brookhurst as well as retaining walls near Lemon St.

**Fernando Chavarria** @91fwy 28m  
On behalf of the #91fwy Construction Team, Happy MLK Day! Wherever you're headed, drive safely & slow for construction zones.

**Fernando Chavarria** @91fwy Dec 24  
On behalf of the #91fwy construction team, we wish you safe travels during this holiday season.

Google

**91 Westbound Lane Widening Project**  
OCTA and Caltrans are adding new WB lane to 91. Project spans from SR-47 to I-5. View this map for project and detour info. No peak-time closures or reductions. Lane closures during off-peak & overnight hours.

**Project Limit on East:**

- WB Brookhurst Bridge: Bridge will be widened in Stage 1. To close for 8 days. Closure starts 7:30A.
- WB Elsie Bridge: Bridge will be widened in Stage 2.
- WB State College Bridge: Bridge will be widened in Stage 2. To close for 8 days. Closure starts 7:30A.
- WB Acacia Bridge: Bridge will be widened in Stage 2.
- WB Raymond Bridge: Bridge will be widened in Stage 1. To close for 8 days. Closure starts 7:30A.
- WB UPRR/Merrill Bridge: Bridge will be widened in Stage 1. Changewater Detour Route.

Map showing parcel data for SR-91 project area. Total # of results: 7309.

Parcel #
344-131-17
095-012-05
095-012-04
095-012-03
095-012-02
095-012-01
073-091-15
073-091-14



# SR-57 Project – Communications & Engagement

**SR-57 Northbound Widening Project**  
**YORBA LINDA BOULEVARD ON-RAMP**  
**57-Hour Closure**  
**October 4 – October 7**

Imperial Hwy.  
 Placentia Ave.  
 Yorba Linda Blvd.  
 DETOUR  
 CLOSED

octa.net/sr57

**Ramp Closure:**  
 Eastbound Yorba Linda Boulevard on-ramp to northbound SR-57

**Detour:**  
 Going eastbound on Yorba Linda Boulevard, turn left onto Placentia Avenue, turn left on Imperial Highway to northbound SR-57 on-ramp

**Stay Connected.**

octa.net/sr57

f 57 Freeway

@57fwy

For best display of this e-mail, [click to view as a Web page](#)

**SR-57 Northbound Widening Project Detour Map**

Your SR-57 Outreach Specialist  
**Fernando Chavarria**  
 fchavarria@octa.net  
 (714) 560-5308

**CLICK HERE**

octa.net/sr57

f 57 freeway

@57fwy

goOCTA

Your SR-57 Outreach Team HERE TO HELP YOU!

Keeping You Connected

SR-57 Northbound Widening Project

**FAST FACTS**  
**Progress & Improvements**

**Katella Avenue Bridge**

Crews continue to expand the Katella Avenue bridge in Anaheim as part of the widening of the northbound SR-57 freeway.

**#57fwy**



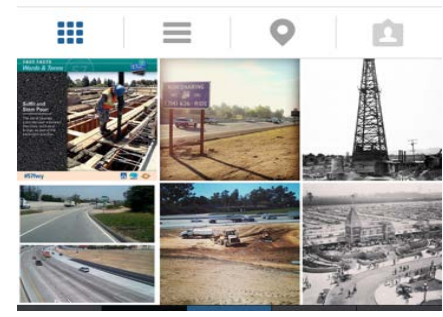
91 posts

121 followers

52 following

Following

**57 Freeway**  
 Manager of Community Outreach for the #57fwy Northbound Widening Project | Fernando Chavarria  
 octa.net/sr57



# I-5 (SR-73 to El Toro Road)



<b>Development Phase</b>	<b>Estimated Dates</b>	<b>Outreach Purpose</b>
Project Approval Environmental Document	Mid 2014	Project Awareness Public Hearing/Engagement Project Approval
Final Design	Mid 2014-Mid 2017	Work with local cities 35%, 65% and 100% Traffic Management
Construction	2018	Construction Outreach

# I-405 Improvement Project



- Preferred Alternative
- Final EIR/EIS
  - Response to comments
- Speakers Bureau
- Soundwall Surveys and Meetings
- Community Ascertainment





# Community Ascertainment



- Identify project stakeholders
- Conduct briefings
- Test key messages
- Identify issues
- Establish communication protocols
- Develop database
- Develop targeted communication plans

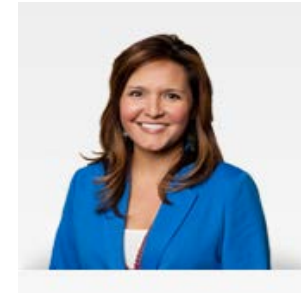
# For More Information



**Christina Byrne**  
714.560.5717  
cbyrne@octa.net



**Fernando Chavarria**  
714.560.5306  
fchavarria@octa.net  
@91fwy



**Sarah King**  
714.560.5376  
sarahking@octa.net  
@WCCProjectInfo